

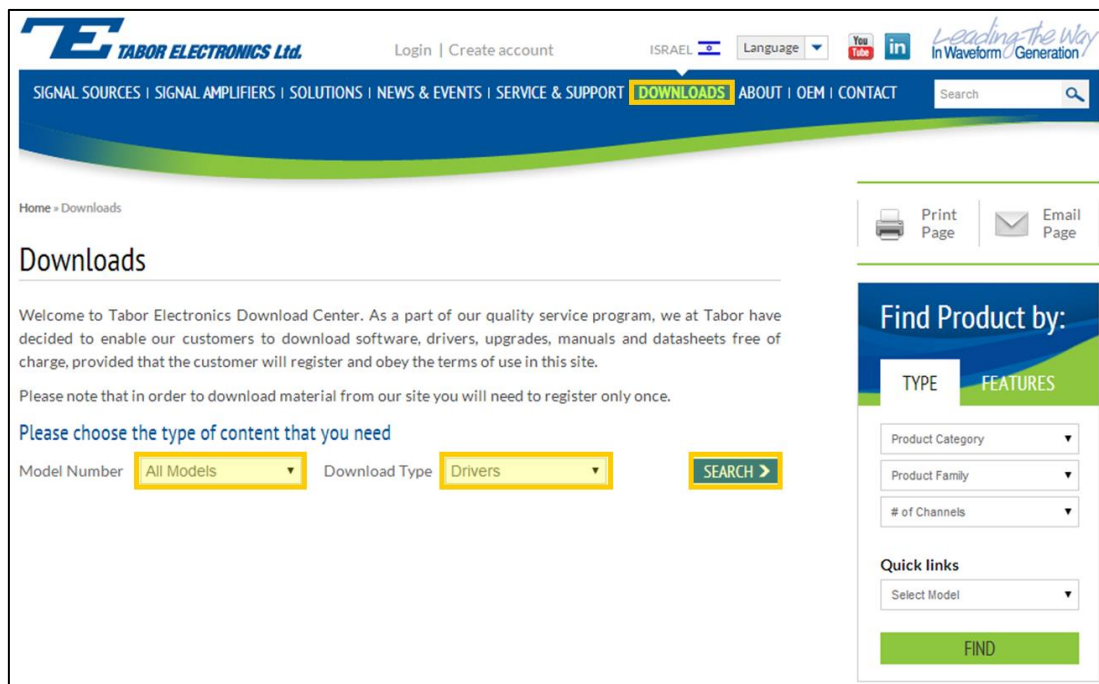
How to Simply Connect WW, WS & PM Series via USB

This document contains instructions on how to simply **connect to Tabor Electronics devices** via their USB port. The following devices are covered in this document.

- ◆ All WW, PM (none "A") and WS Series, excluding WS835x models

➔ **To connect the Tabor unit via the USB port:**

1. Install the USB device driver, which can be accessed either on the CD-ROM disk provided with your Tabor device, or from Tabor Electronics web site at <http://www.taborelec.com/>.
2. To download the driver from the web site, click on **Downloads**, and select the model from the **Model Number** drop-down box, and select "Drivers" from the **Download Type** drop-down box. Click on the **Search** button.



The screenshot shows the 'Downloads' page of the Tabor Electronics website. The header includes the company logo, navigation links (SIGNAL SOURCES, SIGNAL AMPLIFIERS, SOLUTIONS, NEWS & EVENTS, SERVICE & SUPPORT, DOWNLOADS, ABOUT, OEM, CONTACT), and a search bar. The 'Downloads' section is highlighted in the navigation bar. The main content area is titled 'Downloads' and includes a welcome message and a note about registration. Below this, there is a section titled 'Please choose the type of content that you need' with two dropdown menus: 'Model Number' (set to 'All Models') and 'Download Type' (set to 'Drivers'). A 'SEARCH' button is located to the right of these dropdowns. On the right side of the page, there is a 'Find Product by:' section with a 'TYPE' tab selected, showing dropdowns for 'Product Category', 'Product Family', and '# of Channels'. Below this is a 'Quick links' section with a 'Select Model' dropdown and a 'FIND' button.

Download a suitable USB driver from the selection of drivers that appears.

- The .EXE version for Win XP
- The .ZIP version for Win7 64-bit

Drivers	USB Driver for the entire Wonder Wave, Pulse Master and Wave Standard Series (.exe version)	01/10/2009	Download (1.3 Mb)
Drivers	USB Driver for the entire Wonder Wave, Pulse Master and Wave Standard Series (.zip version)	01/10/2009	Download (725.9 Kb)

- To activate the USB interface, access the **Select Interface** screen from the **Top Menu>>Utilities >> Remote Setup** menu, select the **USB** option, and press **ENTER**.



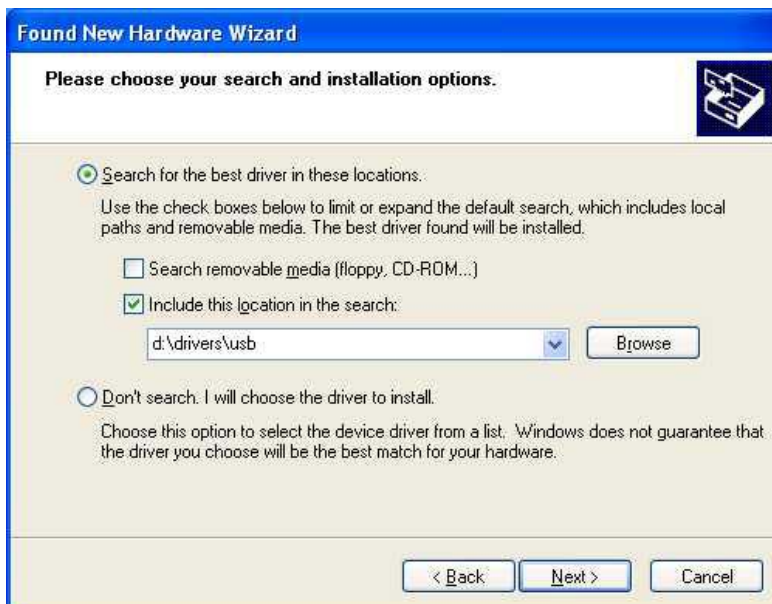
- Connect your computer to the device using a USB cable. The following message will appear on your computer screen:



5. The Hardware Wizard appears as shown below. Choose the **Install from a list or specific location (Advanced)** option and click **Next**.



6. The search window appears as shown below. If the driver is located on the installation CD, insert the CD into the computer's CD drive. Select the **Search for the best driver in these locations** button, check the **Include the location in the search** box, and enter the search path of the CD or the location of the driver on the PC (you can use the **Browse** button to select the path using the Browse dialog box). Click **Next**.



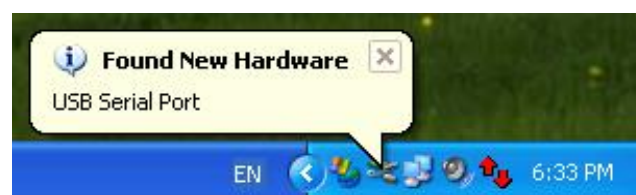
7. If the warning dialog box shown below is displayed, click **Continue Anyway**.



8. When the completion window shown below appears, click **Finish**.



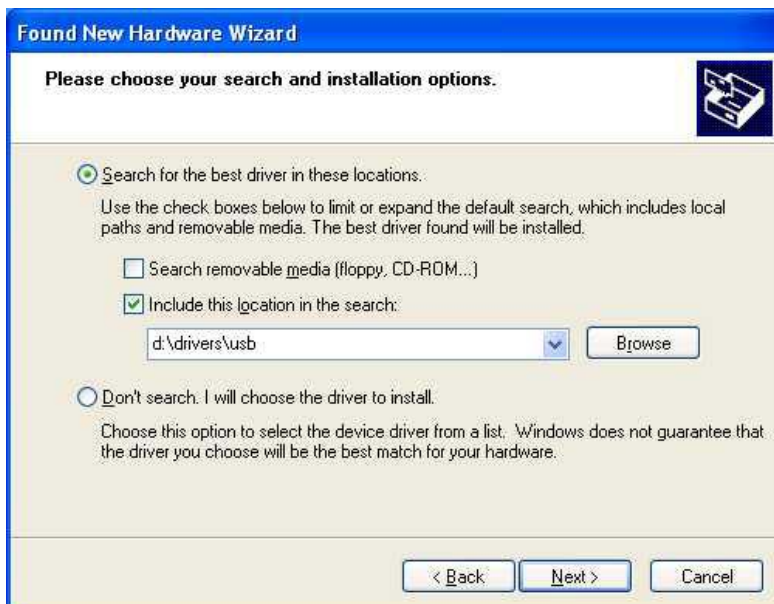
The following message will appear on your computer screen:



9. The Hardware Wizard appears as shown below. Choose the **Install from a list or specific location (Advanced)** option and click **Next**.



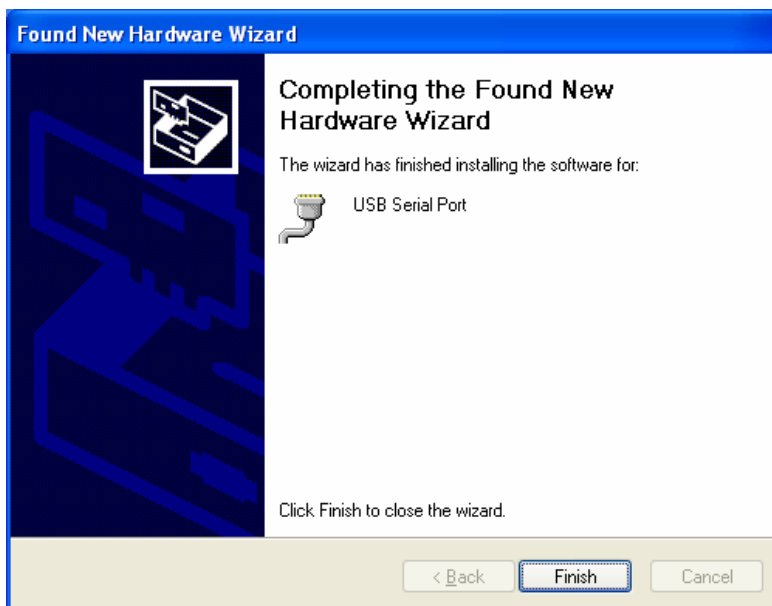
10. The search window appears as shown below. If the driver is located on the installation CD, insert the CD into the computer's CD drive. Select the **Search for the best driver in these locations** button, check the **Include the location in the search** box, and enter the search path of the CD or the location of the driver on the PC (you can use the **Browse** button to select the path using the Browse dialog box). Click **Next**.



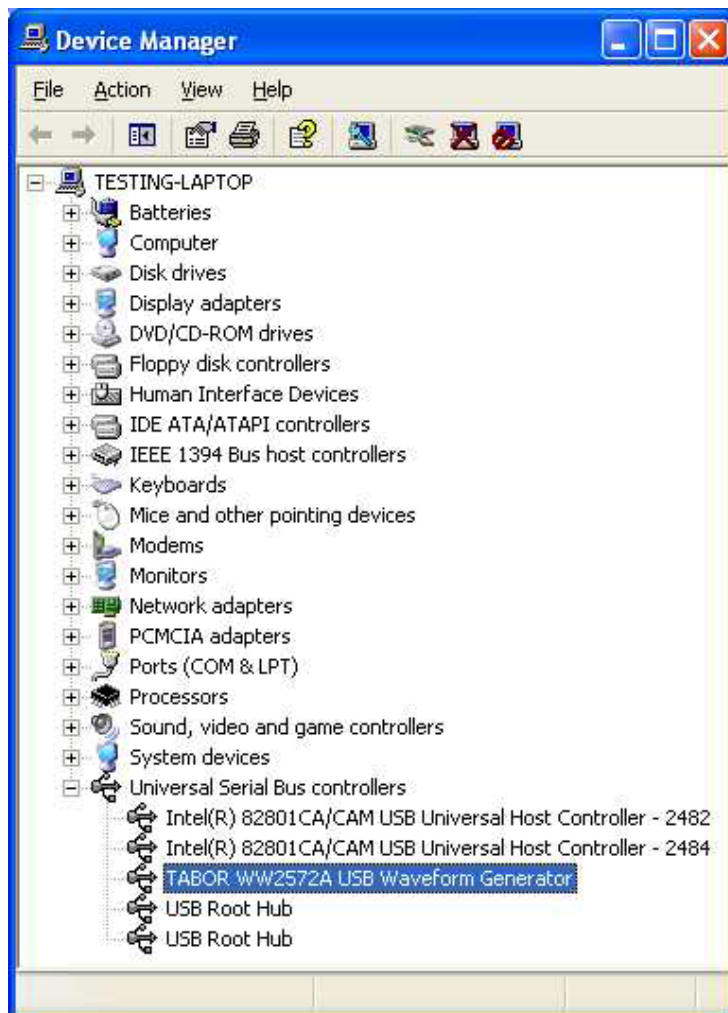
11. If the warning dialog box shown below is displayed, click **Continue Anyway**.



12. When the completion window shown below appears, click **Finish**.



13. To make sure the device's USB port is correctly configured, open your Device Manager (**Control Panel >> Hardware and Sound >> Devices and Printers >> Device Manager**) and compare the settings to the settings displayed in the window below.



For More Information

To learn more about Tabor's solutions or to schedule a demo, please contact your local Tabor representative or email your request to info@tabor.co.il. More information can be found at our website at www.taborelec.com

© Proprietary of Tabor Electronics Ltd.